

1600 - Fixed PCB shields

Fixed PCB shielding compartments

The 1600 Fixed series are used to make EMI/RFI shielded compartments on a PCB to prevent electromagnetic interference between chips/processors/part of the PCB.

A small shielding framework, or shielding fence, can be manufactured by our CNC production system, including teeth or pins in any desired size for attachment to the printed circuit board.

Tooling costs are relatively low, making this system suitable for series of 100 -100,000 pieces. The 1600 Fixed PCB shielding series is made according to your technical drawing.

Options

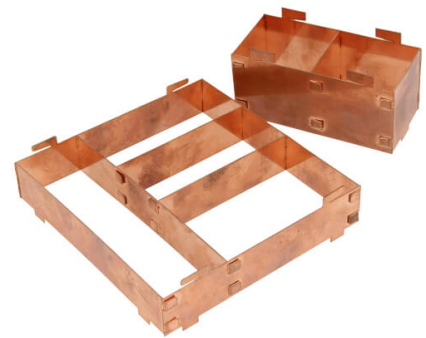
- Several thicknesses depending on attenuation level
- With or without electrical insulation
- With or without conductive self-adhesive
- Available in a fire-retardant version
- Can be made with a lid for extra high shielding performance
- Can be made with openings for passage of cables or ventilation

Benefits

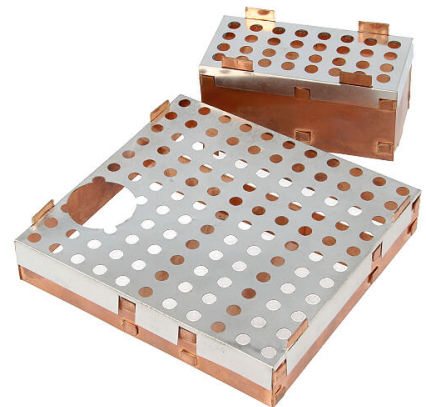
- Can be manufactured by our CNC production system
- Suitable for series of 100 -100,000 pieces
- Made according to customers drawing
- Very quickly a sample produced in only 2 days

Price inquiry

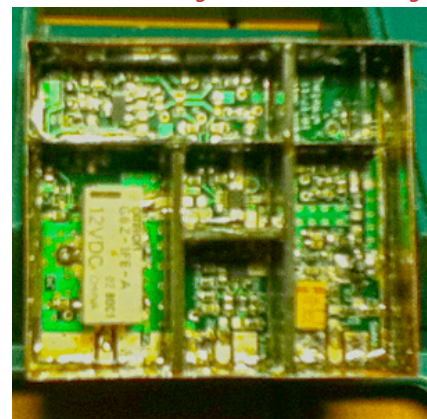
For a price request, we ask you to send us a email to info@hollandshielding.com with your technical drawing in for example .dwg .dxf .pdf or a similar file format made up in vectors. You can also use the quotation section below.



1600 series Fixed PCB shields used to make EMI/RFI shielded compartments on a printed circuit board



1600 series Fixed PCB shields with a lid with cooling holes and a cutout according customers drawing



1600 Series Fixed PCB shield preventing electromagnetic interference between chips/processors/components on the PCB