

9540 - EMP ventilation panel

These drilled ventilation panels are designed for high performance applications, where high attenuation is required particularly in the H (magnetic) field.

In contrast to our competitors where EMP ventilation panels are made from a composition of materials, this is a solid heated ventilation panel. This ensures that no transitions between materials are made and that the shielding performance is many times higher.

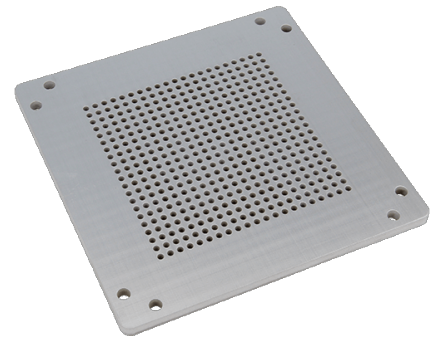
Applications

Ventilation panels are designed for use in electronic enclosures where good air flow is required for cooling and ventilation but where EMC compliance must be ensured. Typical applications are:

- EMI screened rooms
- Military air conditioning units
- High performance communication shelters
- EMP installations/bunkers

Availability

All EMP ventilation panels are individually built to your specification, size, configuration, style, fixing method and finish. These ventilation panels can be supplied with fixing holes to aid mounting.



*9540 series EMP ventilation panels
(on request)*