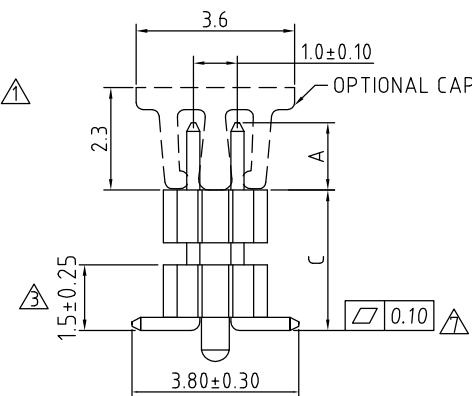
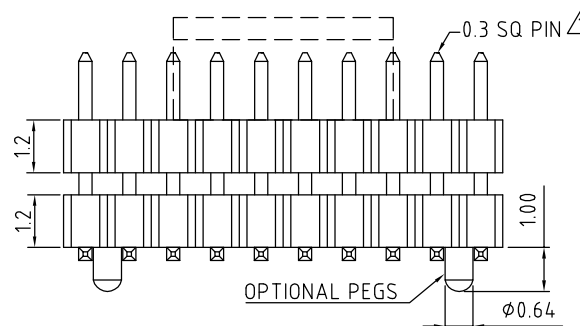
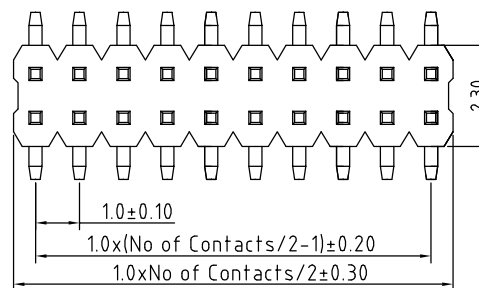
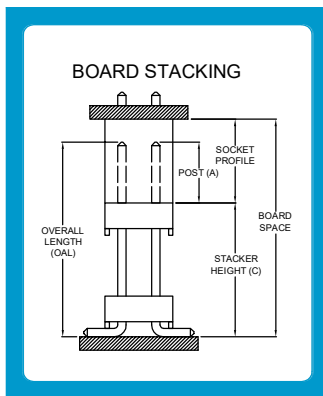


BB02-YH:- 1.00mm x 1.0mm (0.039" x 0.309") PIN HEADER, DUAL ROW, STRAIGHT, SMT TYPE, 04 TO 80 CONTACTS

**SPECIFICATIONS**

- CURRENT RATING: 1AMP
- INSULATOR RESISTANCE: 500 MEGOHMS MIN.
- DIELECTRIC WITHSTANDING: AC 600 V
- CONTACT RESISTANCE: 20m OHMS MAX.
- OPERATING TEMPERATURE: -40°C TO +105°C
- CONTACT MATERIAL: BRASS
- INSULATOR MATERIAL: THERMOPLASTIC, UL 94V-0  
STANDARD: NYLON 6T OR LCP
- PLATING: GOLD OR TIN OVER 30-50U" NICKEL
- SOLDERABILITY - IR REFLOW: 260°C FOR 10 SEC  
MANUAL SOLDER: 350°C FOR 3-5 SEC

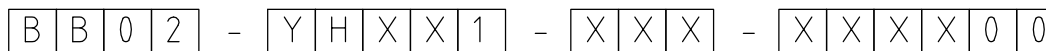


MATES WITH: - BB02-WA

**NOTES:**

- MAX. OAL (OVERALL PIN LENGTH A+C) = 22mm.
- PARTS WITH SMALL PIN NUMBERS MAY BE PACKED IN BOX INSTEAD OF TUBE.

**HOW TO ORDER**



NO. OF CONTACTS:  
04 to 80

LOCATING PEGS OPTIONS:  
A = WITH PEGS  
B = WITHOUT PEGS

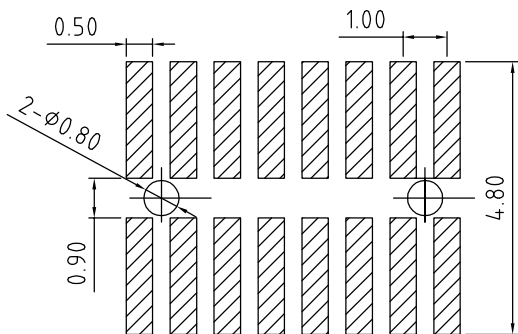
PACKAGING OPTIONS:  
3 = TUBE  
5 = TUBE + CAP  
6 = TAPE & REEL  
8 = TAPE & REEL + CAP  
(see Note 3)

PIN LENGTH A (1/10mm)  
SPECIFY PIN LENGTH  
STANDARD = 20 = 2.0mm  
MINIMUM = 10 = 1.0mm  
MAXIMUM = 150 = 15.0mm  
TOL.: ±0.25mm

PIN LENGTH C (1/10mm)  
SPECIFY PIN LENGTH  
IE 25 = 2.5mm  
MINIMUM = 27 = 2.7mm  
MAXIMUM = SEE NOTES 2.  
TOL.: ±0.25mm

CONTACT PLATING OPTIONS:  
K = GOLD FLASH (STANDARD)  
P = 10U" GOLD OVERALL  
Q = 15U" GOLD OVERALL  
R = 30U" GOLD OVERALL  
T = BRIGHT TIN  
M = MATT TIN

LONGER PIN LENGTH REQUIRED?  
If pin length required is longer than 9.9mm (99), then use a '/' to separate the numbers.  
Example: A=6.0mm, C=12.5mm, mark as 60 / 125 / 00.



RECOMMENDED PCB SMT LAYOUT

REV.	DATE & DRN
10	30/06/05-NYW RELEASE
11	14/09/05-NYW
12	24/07/06-NYW
13	16/05/07-NYW
14	06/06/08-CHC
15	17/07/08-NYW
16	23/07/08-NYW
17	09/07/08-CHC
18	19/02/08-CHC
19	24/02/08-NYW
20	23/09/13-NYW
21	18/03/14-NYW
22	29/07/20-NYW

11	AMEND PIN DIAMETER
12	DRAWING MODIFICATION
13	ADD LENGTH (IN DIA)
14	PLATING MODIFICATION
15	ADD NOTE 1
16	CHANGE PLATING OPTIONS
17	ADD SOLDER LEAD
18	CO-PLANARITY
19	DRAWING MODIFICATION
20	REMOVE NOTE 1
21	ADD NOTE 3
22	ADD LOCATING PEGS OPTION

Scale:	8:1
Drawn:	CHC
App'd:	XXX
Date:	29 JUL '20

THIRD ANGLE	
Title:	PIN HEADER
Revision:	2.2

Unstated Tolerances:	X ± 0.30 X ± 0.25 XX ± 0.15 XXX ± 0.10
Material	SEE NOTE
	NOT TO SCALE
Unit:	mm

Material	SEE NOTE
	NOT TO SCALE
Unit:	mm

Type	BB02-YH
	BB02-YH
Drawing Number:	
Sheet	1 of 1
Drawing	E and OE